

# Mr. Alexander

**RAMYA**  
Modular Kitchen & Interiors

A scenic landscape photograph of a lake with mountains and trees in the background. The lake is calm, reflecting the sky and the surrounding greenery. The mountains are rugged and grey, with some snow patches. The sky is blue with scattered white clouds. The foreground shows a grassy bank on the left.

**Presentation**

**Home Interior, Madhavaram Ch,**















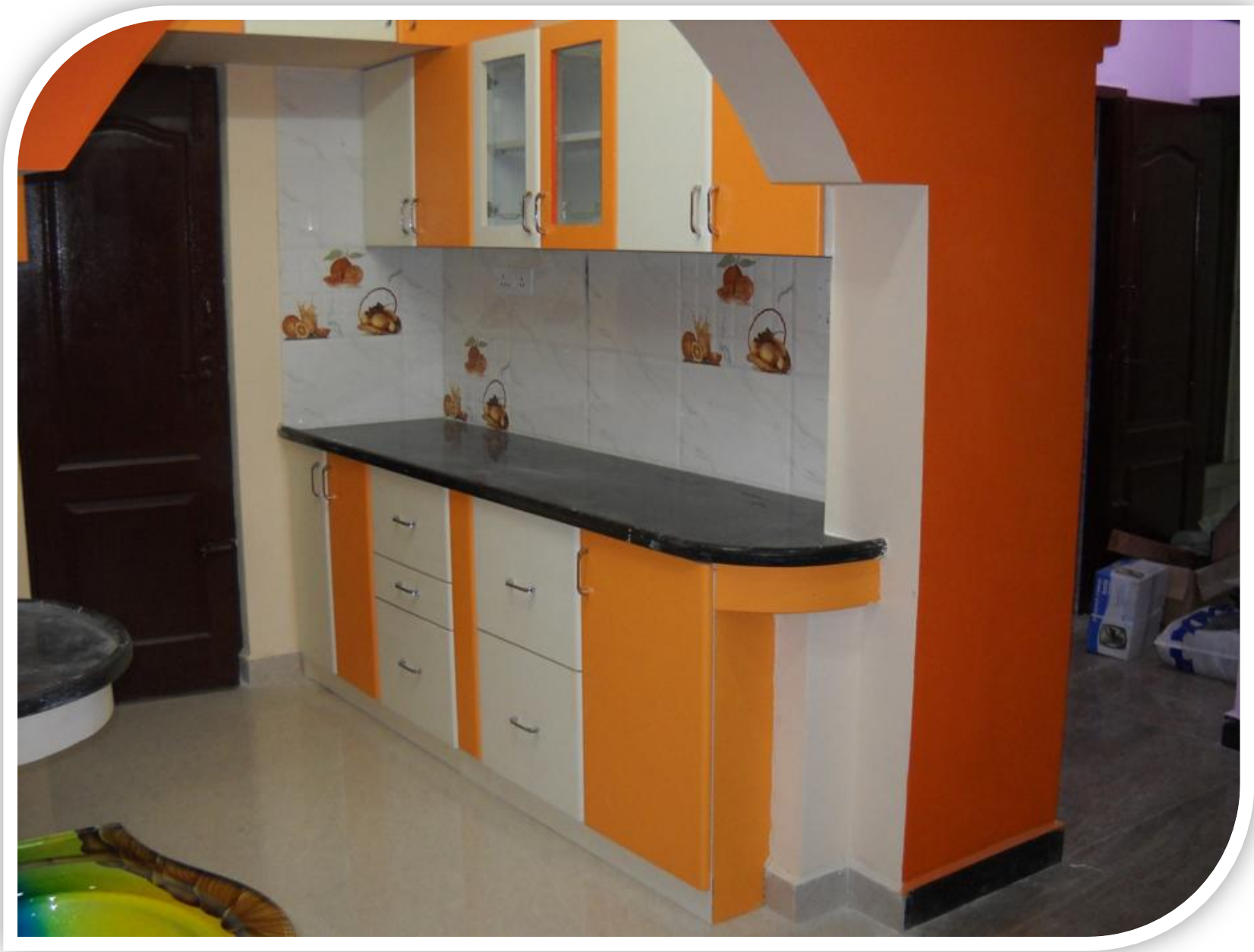




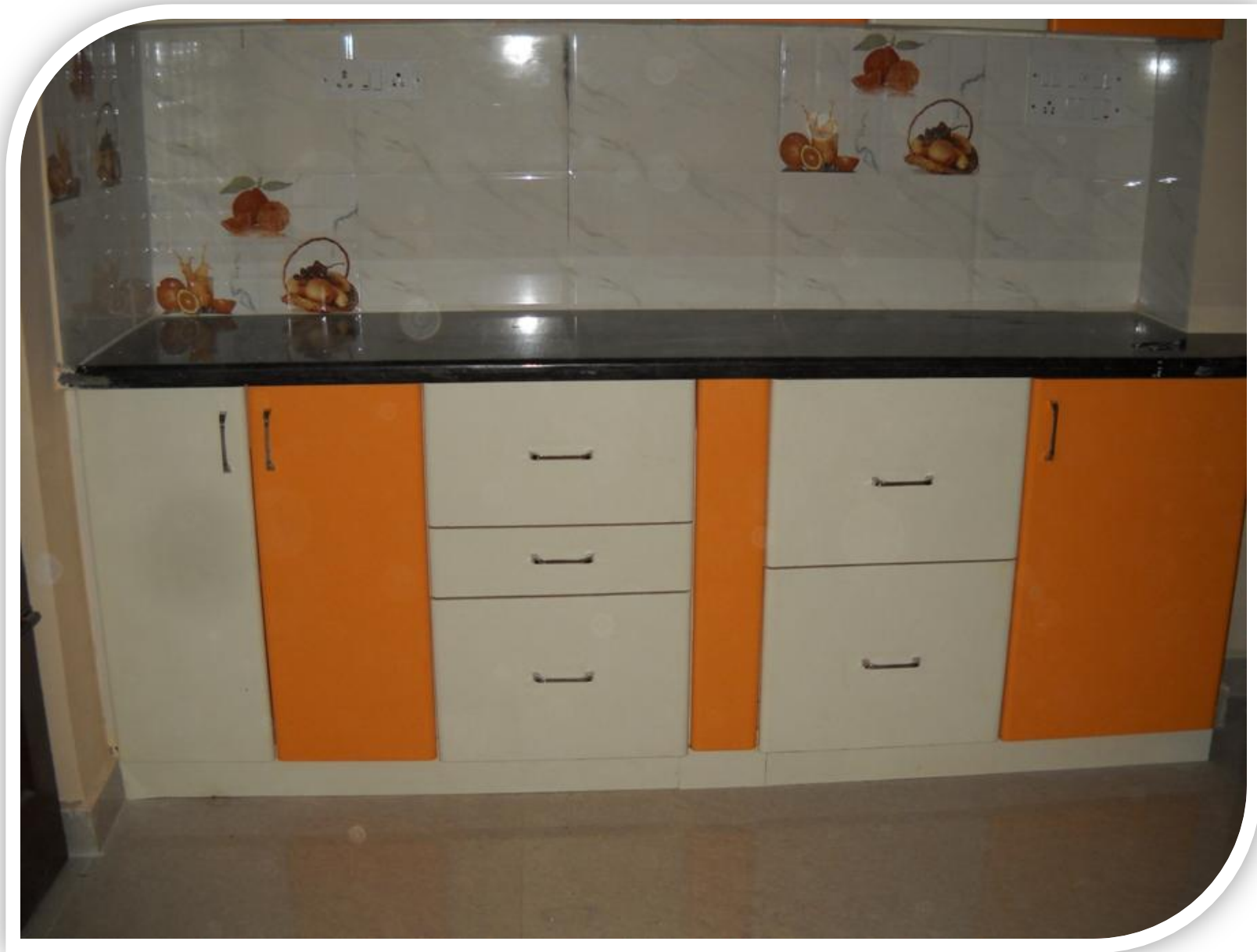








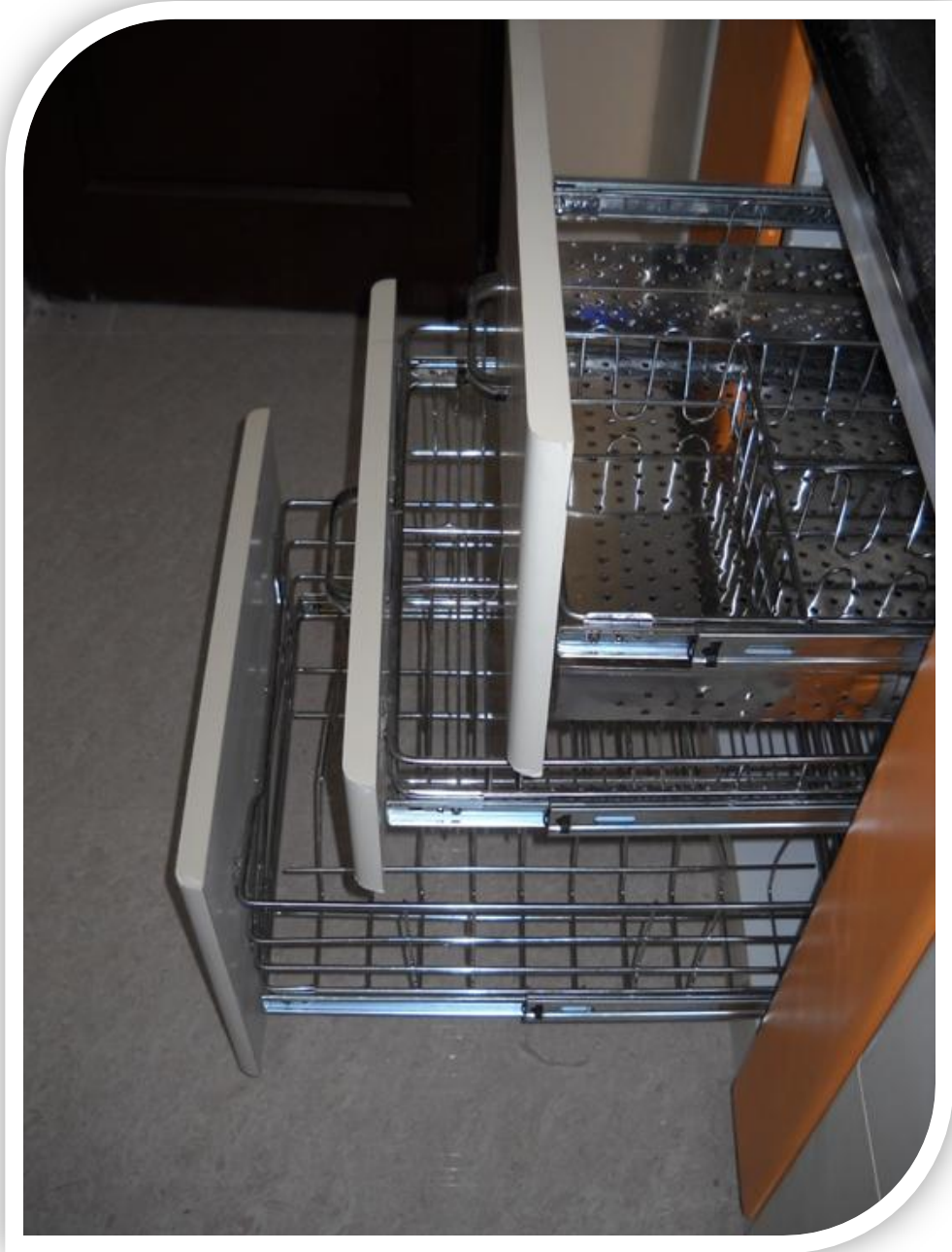




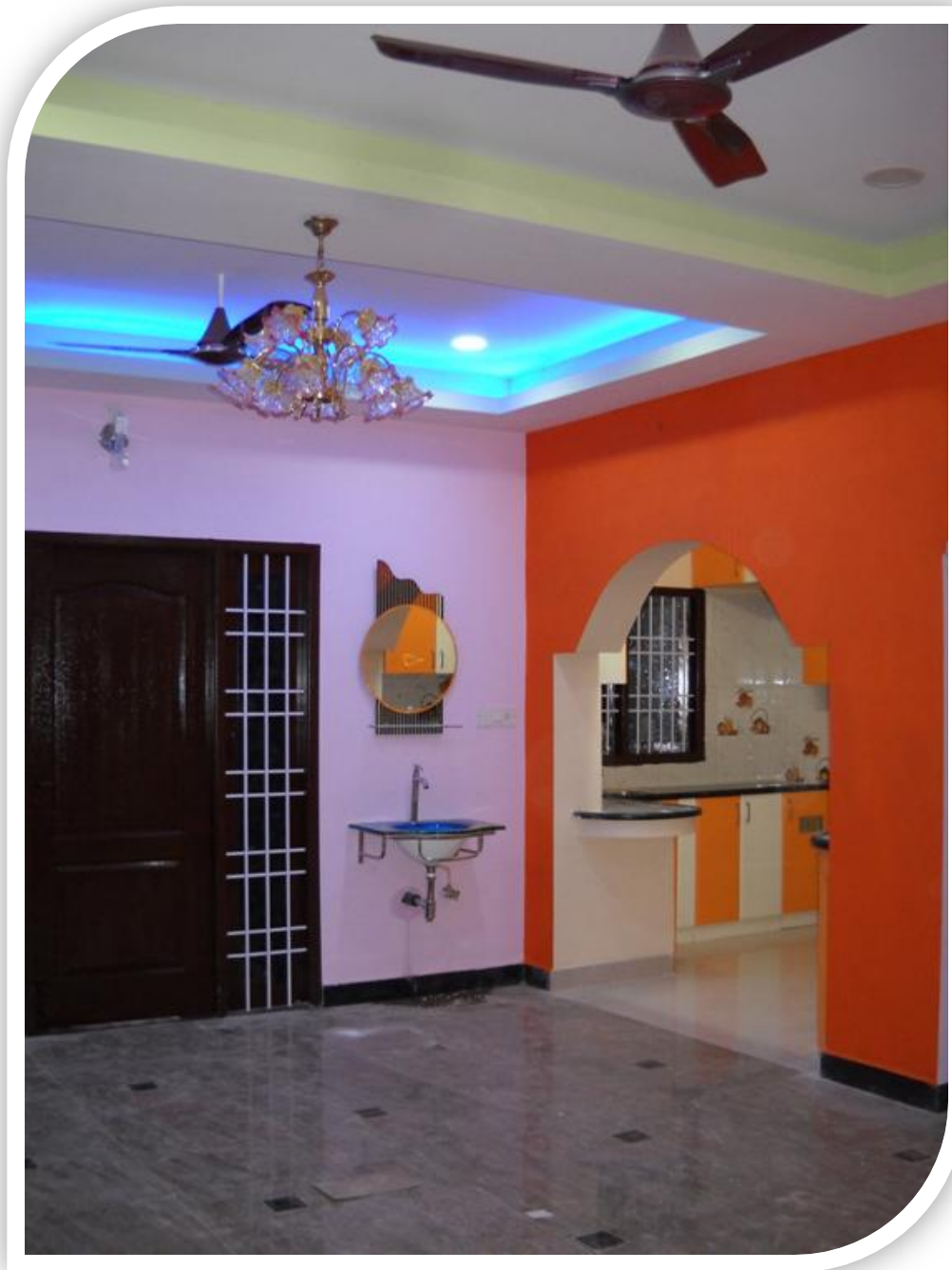
























JOY'S  
NEST



JOY'S  
NE

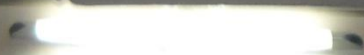






Joy's

NEST













































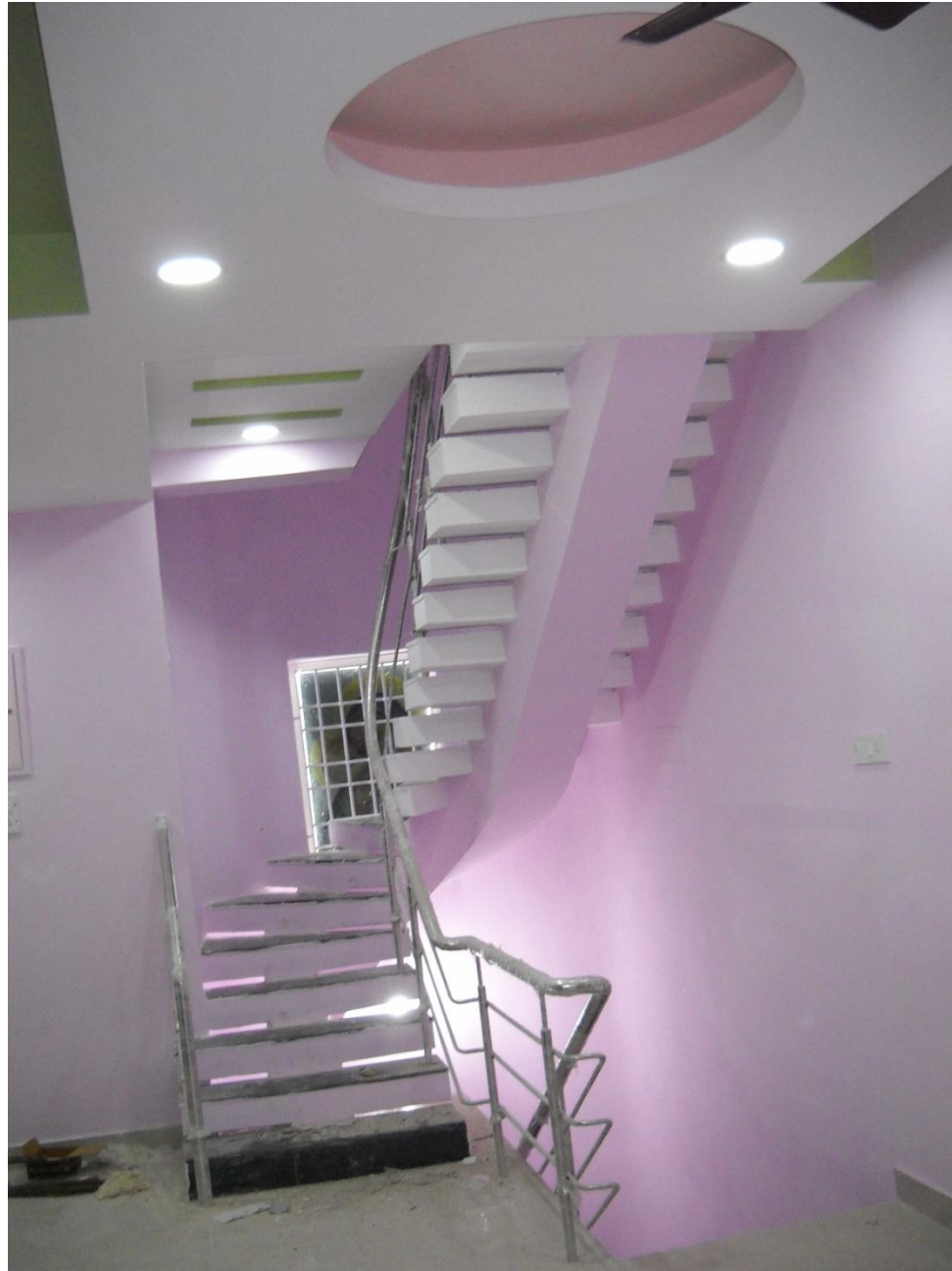


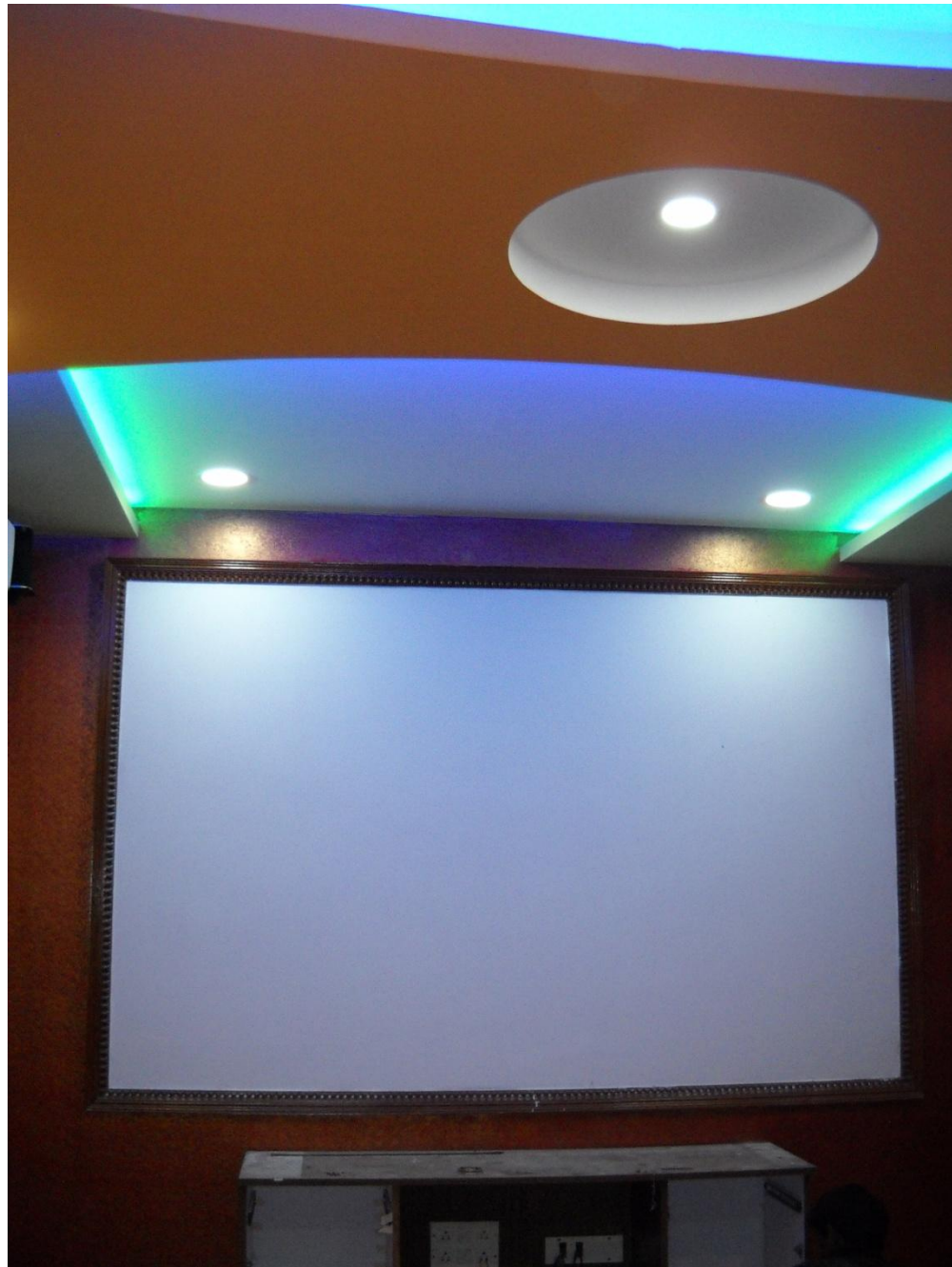


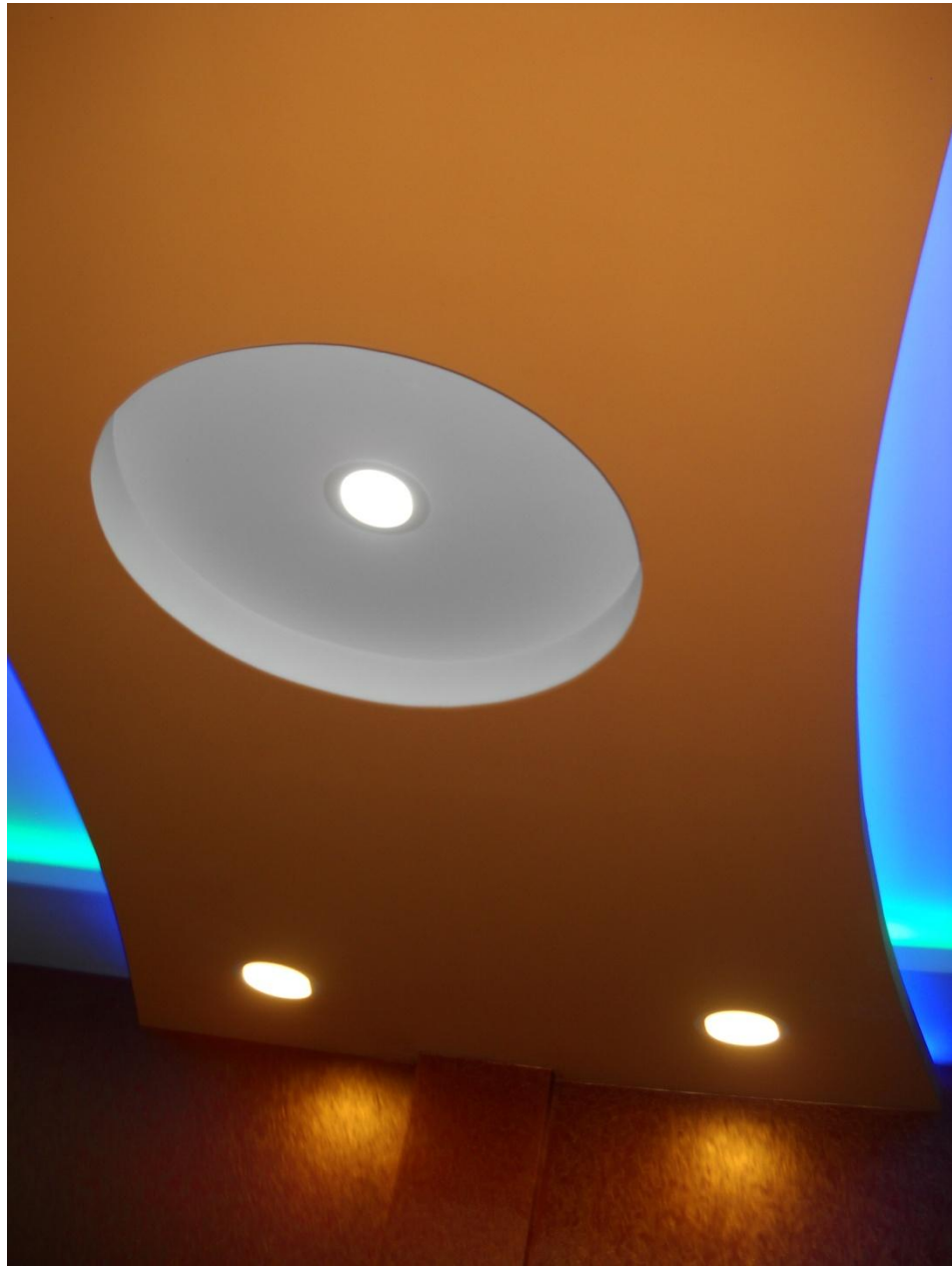


























































## Ramya Modular Kitchen & Interiors

### CUSTOMER FEED BACK

Form No. 109/0

Kindly fill up your opinion / observation about our system. This is required for us to continually improve our system to serve our customer in a better way. Please feel free to comment anything negative also. This record will be kept confidentially .

SI No	Description	Outstanding	Very Good	Good	Satisfactory	Poor
		Marks 5	4	3	2	1
		A	B	C	D	E
1	Quality of Our Products	✓				
2	Our Office Communication	✓				
3	Our Price	✓				
4	Over all our quality	✓				
5	Quality of Our Materials	✓				
	Your suggestions to improve our service to satisfy you in better way					
	Your needs about feature of our services in future. <i>overall job is satisfshety and Staffs are Co-operative.</i>					
Name	<i>A. ALEXANDER.</i>					
Signature	<i>A. Alexander.</i>					
Date	<i>23/11/2013.</i>					
For Office Use						
Review Period:						
Customer Satisfaction Index:						
Improvement Needed:						

Note: All details are summerized in customer feed back analysis report